



## Product Explorer

**Product Explorer®** is a web application for manufacturing companies, offering to the end users a single, homogeneous and easy view of product data that are stored in different systems.

Notwithstanding the spreading of Product Lifecycle Management (PLM) systems, there are still product data in the manufacturing companies that are kept out of those systems, for various reasons: limited life span of data, lack of access to PLM or difficult use of PLM interfaces and functions, etc.

But those data are (or would be) useful for many people within the company, if they could only be centralized and managed without the complexity associated to the UIs of most modern systems.

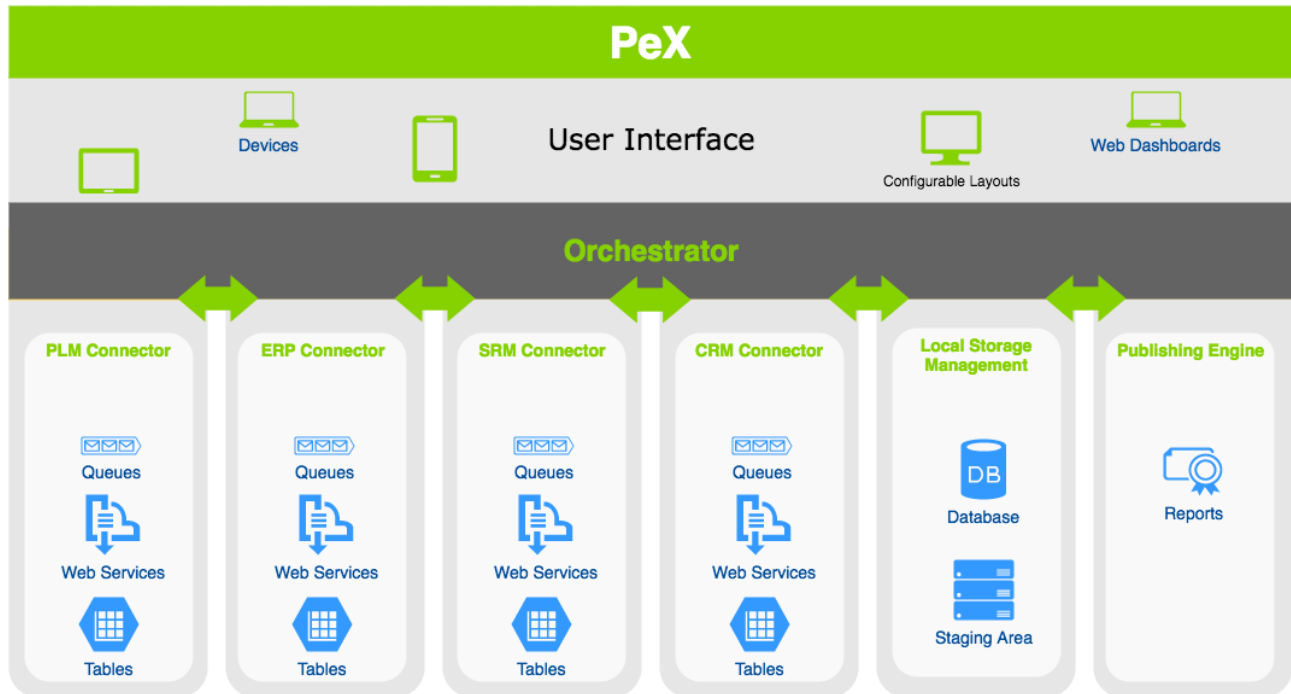
With its easy, simple and intuitive UI, familiar to every Internet user, Product Explorer® minimizes (or voids) the need for training and manuals.

Data can come from many different sources: PLM, ERP, MES, company portals, Microsoft Office and more. In fact Product Explorer® can interface most enterprise systems allowing its users to get an easy access to real time data across the company. At the same time IT managers can maintain a centralized control over those crucial data, while avoiding the proliferation of “unofficial” or “hidden” databases within the company.

With its open architecture Product Explorer® is customizable to accommodate the specific needs of each Customer or department at a very low cost, thanks to non-proprietary languages and tools.

# Architecture

Product Explorer® is designed with a modular architecture, where different modules can be inserted depending on need. The product can be used through a series of firewall layers, segregating the database on a different network from the one of “enterprise” databases like PLM or ERP.



## Functionalities

- Simultaneous access to different systems (PLM, ERP, etc) to get an integrated view
- Access to any document type through specific application (e.g. Microsoft Office or viewers)
- Availability of own database to store information
- Several dashboards for various types of needs
- Internal workflow (approval process and start of modification process)
- Report launch
- Alert activation
- Data export in Microsoft Excel format
- PDF format publication

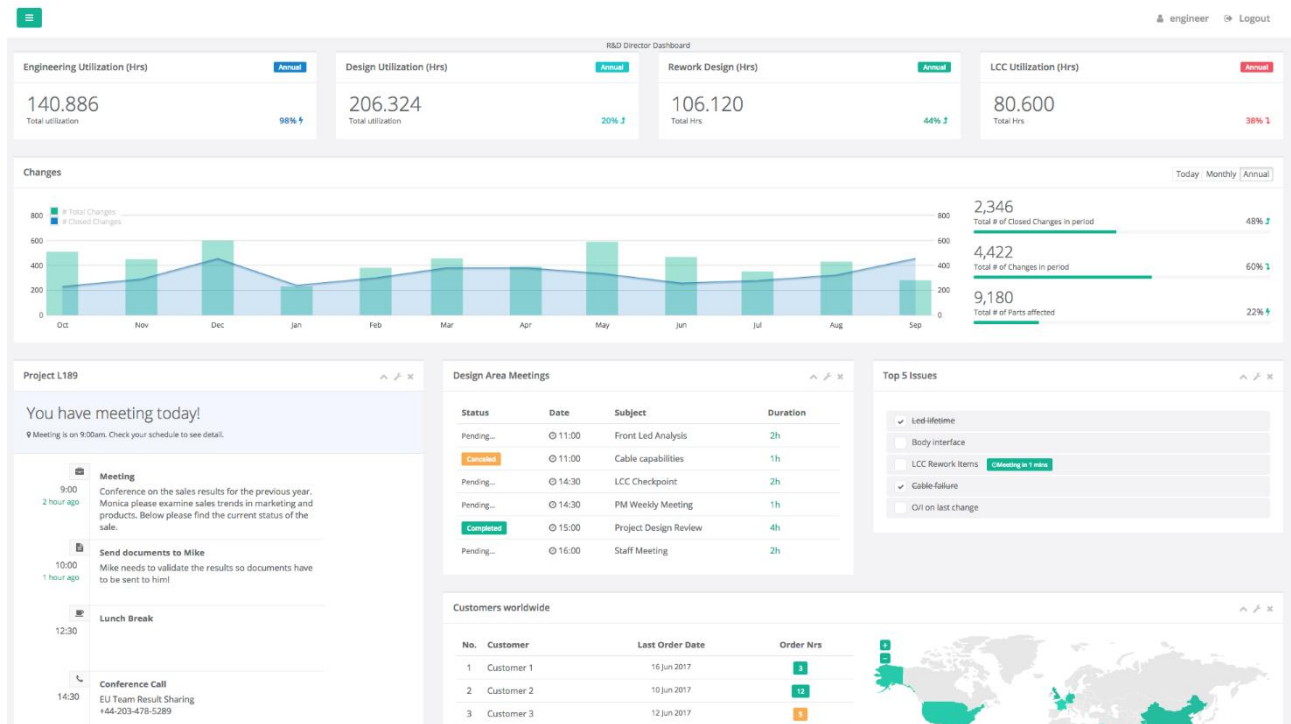
## Characteristics

- Based on a modern and open modular architecture
- Secure access through Internet/Intranet/Extranet
- Works with main browsers (Internet Explorer, Chrome, etc.)
- Available on smartphone and tablet
- Minimal hardware requirements
- Training unnecessary
- Connectors available for Siemens Teamcenter (\*), Dassault Systemes ENOVIA (\*), SAP, etc.

# Conclusions

Product Explorer® promotes the spreading of product data across the company while leaving them in their native environment, yet presenting them in a uniform, elegant and meaningful way to the end users.

The Product Explorer® development team has more than 25 years of experience in managing product data for manufacturing companies.



R&D Director's dashboard



K2innovation srl  
Via Ippolito Nievo 25  
10153 Torino – Italy  
www.k2innovation.it

